

PURCHASING ADDITIONAL FILTERS

To maintain the performance of your air purifier, **only** use official Levoit filters. To buy replacement filters, visit Levoit's online store. Go to **levoit.com** for more information.

CUSTOMER SUPPORT

Arovast Corporation
1202 N. Miller St., Suite A
Anaheim, CA 92806

Email: support@levoit.com
Toll-Free: (888) 726-8520

Support Hours
Mon–Fri, 9:00 am–5:00 pm PST/PDT

*Please have your order invoice and order ID ready before contacting Customer Support.

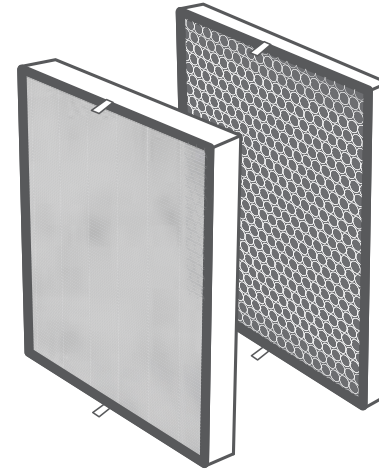
JJ0420GY-M1_0420LV-PUR131-RF

True HEPA Replacement Filters

Model: LV-PUR131-RF

Thank you for purchasing the Levoit True HEPA Replacement Filters. If you have any questions or concerns, please reach out to us at **support@levoit.com**.

Note: These filters are made for the Levoit LV-PUR131, LV-PUR131S, LV-H131-RWH, LV-H131S-RXW, and LV-RH131S Air Purifiers.



SAFETY INFORMATION

Follow all safety guidelines. Read all instructions before using.

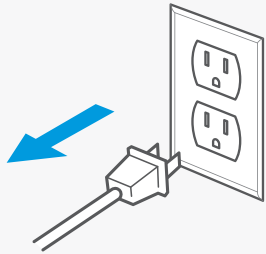
- **Do not** allow children to play with the plastic packaging. Immediately discard the plastic after unwrapping the filters.
- A damaged filter may not properly filter air. If a filter is damaged, contact Customer Support.

Note:

- The filters should be replaced every 6–8 months.
- **Do not** clean the filters with water or other liquids.

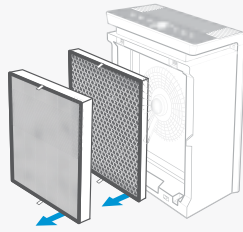
REPLACING THE FILTERS

1.



Unplug the air purifier and remove the filter cover.

2.



Remove the old filters.

3.



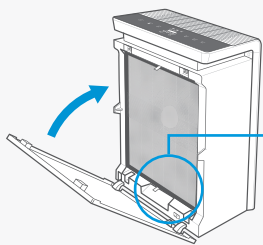
Unwrap the Activated Carbon Filter and place into the air purifier with pull tabs facing out.

4.



Unwrap the Preliminary/True HEPA Combination Filter and place into the air purifier with pull tabs facing out.

5.



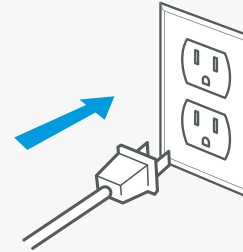
Replace the filter cover.



Note: Make sure the filter cover is closed securely and the safety tab at the bottom of the cover is in contact with the safety switch, or the air purifier will **not** turn on.

RESETTING THE CHECK FILTER INDICATOR

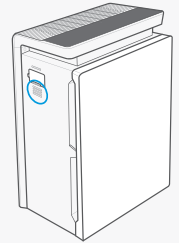
1.



Plug in the air purifier and turn it on.

2.

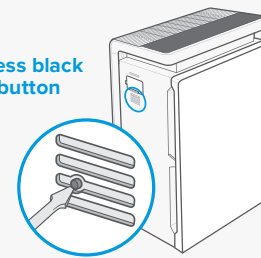
black button
in vent



Locate the button vent on the side of the air purifier.

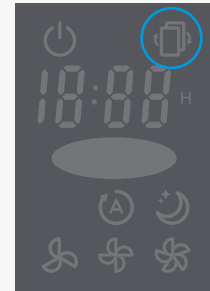
3.

press black
button



Use a paperclip, small flathead screwdriver, or small object to press the reset button.

4.



The Check Filter Indicator will turn off when the reset is complete.